



**Asking Price £250,000 Leasehold**

**1 Bedroom, Apartment - Retirement**

17, Knights Lodge North Close, Lymington, Hampshire, SO41 9PB

 0800 077 8717

 [sales@churchillsl.co.uk](mailto:sales@churchillsl.co.uk)

 [churchillsl.co.uk](http://churchillsl.co.uk)

**Churchill**  
Sales & Lettings  
Retirement Property Specialists

# Knights Lodge

Knights Lodge is a stylish development of 41 one and two bedroom retirement apartments situated on North Close in Lymington. The Georgian market town of Lymington is positioned within the New Forest National Park and is situated on the Lymington River on the Solent. A street market is held in the town every Saturday which attracts visitors from near and far to shop for everyday produce including fruit and vegetables, bread, meat and cakes, as well as clothes, jewellery, local crafts and household items.

Knights Lodge is ideally located for access to the high street which has a mix of national and independent retailers, as well as high street banks, opticians, florists, travel agents, gift shops, supermarkets, cafes and public houses. Lymington Library is situated on North Close. The cobbled street of the old town leads you to the Quay where you will find a mixed array of luxury yachts and fishing boats, and where you can take a cruise along the Lymington River. The town has two marinas and two sailing clubs and is home to the Royal Lymington Yacht Club.

Lymington Town railway station is located in Station Street where South West Trains operates services to Lymington Pier and to Brockenhurst where connecting trains can be boarded for destinations including Southampton, Winchester, London Waterloo, Poole, Weymouth and Manchester. The Isle of Wight car and passenger ferry operates regularly between Lymington and Yarmouth taking just 40 minutes, making it the shortest and fastest route to the Isle of Wight.

The Lodge manager is on hand throughout the day to support the Owners and keep the development in perfect shape as well as arranging many regular events in the Owners' Lounge from coffee mornings to games afternoons.

A Guest Suite is available for your friends and family to stay in. In addition, you are entitled to use the Guest Suites at all Churchill Living developments across the country. Prices are available from the Lodge Manager.

Knights Lodge has been designed with safety and security at the forefront, the apartment has an emergency Careline system installed, monitored by the onsite Lodge Manager during the day and 24 hours, 365 days a year by the Careline team. A Careline integrated intruder alarm, secure video entry system and sophisticated fire and smoke detection systems throughout both the apartment and communal areas provide unrivalled peace of mind.

Knights Lodge is managed by the award winning Churchill Estates Management, working closely with Churchill Living and Churchill Sales & Lettings to maintain the highest standards of maintenance and service for every lodge and owner.

Knights Lodge requires at least one apartment Owner to be over the age of 60 with any second Owner over the age of 55.



# Property Overview

DRAFT PARTICULARS - Awaiting verification from the seller

**\*\*ONE BEDROOM RETIREMENT APARTMENT WITH JULIET BALCONY\*\***

Churchill Sales & Lettings are delighted to be marketing this lovely one bedroom ground floor apartment. The property is presented in very good order throughout and is conveniently located for the Lift and Stairs.

The Living Room offers ample space for living and dining room furniture and benefits from a feature electric fire with attractive surround. A French door opens to a Juliet balcony and windows provide natural light.

The Kitchen is accessed via the Living Room and offers a range of modern eye and base level units with working surfaces over and tiled splashbacks. There is a built-in waist height oven, 4 ring electric hob with extractor hood over, a fridge, a frost-free freezer and washer/dryer. A window allows for light and ventilation.

The Bedroom is a generous double room with a very large walk-in wardrobe. There is also plenty of space for additional bedroom furniture if desired.

The Shower Room offers a large, curved shower with handrail, a heated towel rail, WC and wash hand basin with vanity unit beneath.

Perfectly complementing this wonderful apartment is a useful storage cupboard located in the hallway.

Call us today to book your viewing!



# Features

- One bedroom ground floor apartment with Juliet balcony
- Fully fitted kitchen with integrated appliances
- Owners' lounge & kitchen with regular social events
- 24 hour Careline system for safety and security
- Great location close to the town centre
- Lodge manager available 5 days a week
- Owners' private car park
- Lift to all floors
- A Guest Suite is available for your friends and family to stay in



# Key Information

Service Charge (Year ending 31st May 2027): £3,461.01 per annum.

Ground Rent: £822.98 per annum. To be reviewed in June 2032

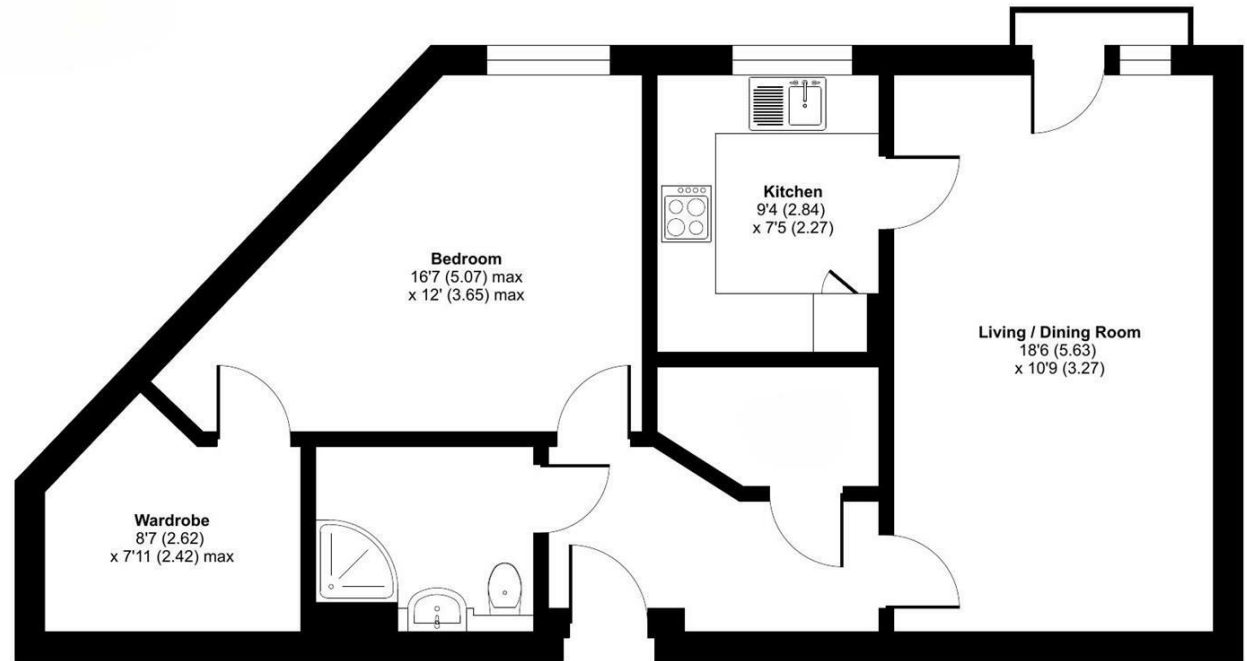
Council Tax: Band C

999 year Lease commencing 2018

Please check regarding Pets with Churchill Estates Management. Any consents given in relation to pets are subject to the terms of the lease and any further rules and regulations made by Churchill Estates Management.

Service charges include: Careline system, buildings insurance, water and sewerage rates, communal cleaning, ground source heating, utilities and maintenance, garden maintenance, lift maintenance, lodge manager and a contribution to the contingency fund.

Approximate Area = 635 sq ft / 58.9 sq m  
For identification only - Not to scale



EPC Rating: B

 Floor plan produced in accordance with RICS Property Measurement 2nd Edition, incorporating International Property Measurement Standards (IPMS2 Residential), © n/checom 2026. Produced for Churchill Sales & Lettings Limited. REF: 1466359

DESCRIPTION Measurements are approximate and some may be maximum on irregular walls.

CONSENTS We have not had sight of any relevant building regulations, guarantees or planning consents. All relevant documentation pertaining to this property should be checked with your legal advisor before exchanging contracts.

Property Particulars Disclaimer: These particulars are intended only as general guidance. The Company therefore gives notice that none of the material issued or visual depictions of any kind made on behalf of the Company can be relied upon as accurately describing any of the Specified Matters prescribed by any Order made under the Consumer Protection from Unfair Trading Regulations, 2008. Nor do they constitute a contract, part of a contract or a warranty.



---

☎ 0800 077 8717

✉ sales@churchillsl.co.uk

🌐 churchillsl.co.uk

**Churchill**  
Sales & Lettings  
Retirement Property Specialists