



---

**Asking Price £210,000 Leasehold**

**2 Bedroom, Apartment - Retirement**

42, Tregolls Lodge St. Clements Hill, Truro, Cornwall, TR1 1GW

 0800 077 8717

 [sales@churchillsl.co.uk](mailto:sales@churchillsl.co.uk)

 [churchillsl.co.uk](http://churchillsl.co.uk)

**Churchill**  
Sales & Lettings  
Retirement Property Specialists

# Tregolls Lodge

Tregolls Lodge is an impressive development of 59 one and two-bedroom apartments situated in the historic city and port of Truro.

Located on the edge of the city centre, the development is within easy access to many local amenities, shops, restaurants and cafes. Truro's most recognisable feature is its Cathedral, rising 76 metres above the city at its highest spire. The Victoria Gardens are near the city centre and provide a haven of peace.

Local transport is excellent with buses connecting to many of the surrounding towns and villages in Cornwall. Truro Railway Station connects the City to the rest of the country.

The Lodge manager is on hand throughout the day to support the Owners and keep the development in perfect shape as well as arranging many regular events in the Owners' Lounge from coffee mornings to games afternoons.

A Guest Suite is available for your friends and family to stay in. In addition, you are entitled to use of the Guest Suites at all Churchill Living developments across the country. Prices are available from the Lodge Manager.

Tregolls Lodge has been designed with safety and security at the forefront, the apartment has an emergency Careline system installed, monitored by the onsite Lodge Manager during the day and 24 hours, 365 days a year by the Careline team. A Careline integrated intruder alarm, secure video entry system and sophisticated fire and smoke detection systems throughout both the apartment and communal areas provide unrivalled peace of mind.

Tregolls Lodge is managed by the award-winning Churchill Estates Management, working closely with Churchill Living and Churchill Sales & Lettings to maintain the highest standards of maintenance and service for every lodge and owner.

Tregolls Lodge requires at least one apartment Owner to be over the age of 60 with any second Owner over the age of 55.



# Property Overview

## \*\*TWO BEDROOM THIRD FLOOR RETIREMENT APARTMENT\*\*

Situated in the fantastic development of Tregolls Lodge is this delightful two bedroom apartment. The property provides spacious accommodation and is presented in very good order throughout.

The Living Room benefits from an L-shaped design that provides ample space for living and dining room furniture. A French door opens to a Juliet Balcony and windows provide lots of natural light.

The Kitchen is accessed via the Living Room and offers a range of modern eye and base level units with working surfaces over and tiled splashbacks. There is a NEFF slide and hide oven, NEFF induction hob, washer/dryer, fridge and frost-free freezer.

Bedroom One is a good-sized double with a built-in mirrored wardrobe. A large window provides lots of natural light.

Bedroom Two is another good-sized double with a full sized fitted wardrobe. This room could also be used as a separate Living Room, Study or Hobby Room.

The Shower Room offers a curved shower with handrail, a WC, wash hand basin with vanity unit beneath and a heated towel rail.

A separate WC is located off the Hallway and offers a heated towel rail, WC and wash basin with vanity unit beneath.

Perfectly complimenting this wonderful apartment is a useful storage cupboard located in the hallway.

Call us today to book your viewing at Tregolls Lodge!



# Features

- Two bedroom third floor apartment with Juliet Balcony
- Modern fitted kitchen with integrated appliances
- Lodge Manager available 5 days a week
- Owners' Lounge & Coffee Bar with regular social events
- 24 hour Careline system for safety and security
- Owners' private car park
- Close to the town centre & excellent transport links
- Large and private landscaped gardens
- A Guest Suite is available for your friends and family to stay in. In addition, you are entitled to use the Guest Suites at all Churchill Living developments across the country



# Key Information

Service Charge (Year ending 31st May 2027): £4,764.47 per annum.

Ground rent £888.97 per annum. To be reviewed May 2030.

Council Tax Band C

125 year Lease commencing 2016

Please check regarding Pets with Churchill Estates Management. Any consents given in relation to pets are subject to the terms of the lease and any further rules and regulations made by Churchill Estates Management.

Service charges include: Careline system, buildings insurance, water and sewerage rates, communal cleaning, utilities and maintenance, apartment heating via the Air Source Heat Pump, garden maintenance, lift maintenance, lodge manager and a contribution to the contingency fund.

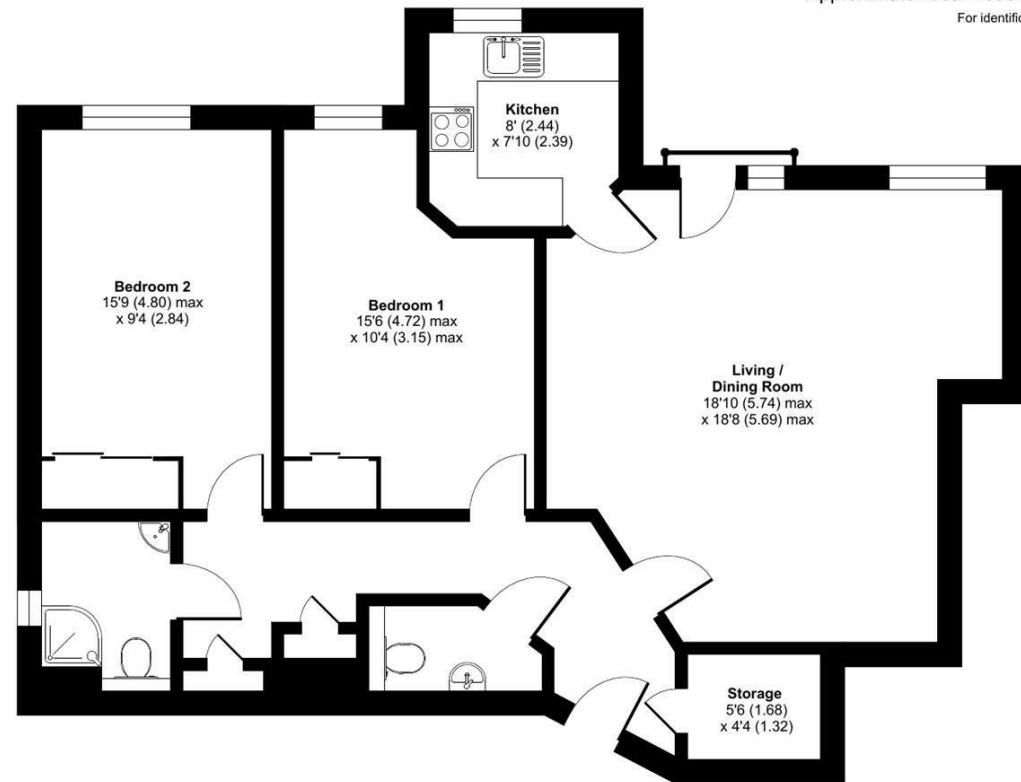
EPC Rating: C

DESCRIPTION Measurements are approximate and some may be maximum on irregular walls.

CONSENTS We have not had sight of any relevant building regulations, guarantees or planning consents. All relevant documentation pertaining to this property should be checked with your legal advisor before exchanging contracts.

Property Particulars Disclaimer: These particulars are intended only as general guidance. The Company therefore gives notice that none of the material issued or visual depictions of any kind made on behalf of the Company can be relied upon as accurately describing any of the Specified Matters prescribed by any Order made under the Consumer Protection from Unfair Trading Regulations, 2008. Nor do they constitute a contract, part of a contract or a warranty.

Approximate Area = 890 sq ft / 82.6 sq m  
For identification only - Not to scale



Floor plan produced in accordance with RICS Property Measurement 2nd Edition, incorporating International Property Measurement Standards (IPMS2 Residential). © n/checom 2025. Produced for Churchill Sales & Lettings Limited. REF: 1326583



☎ 0800 077 8717

✉ sales@churchillsl.co.uk

🌐 churchillsl.co.uk

**Churchill**  
Sales & Lettings  
Retirement Property Specialists