



---

**Asking Price £199,950 Leasehold**

**1 Bedroom, Apartment - Retirement**

16, Windsor Lodge Wellington Avenue, Princes Risborough, Buckinghamshire, HP27 9EE

 **0800 077 8717**

 **sales@churchillsl.co.uk**

 **churchillsl.co.uk**

**Churchill**  
**Sales & Lettings**  
Retirement Property Specialists



# Windsor Lodge

Windsor Lodge is a stylish development of 46 one and two bedroom apartments located in the market town of Princes Risborough, situated between Aylesbury, High Wycombe and Thame.

The Chilterns area of outstanding natural beauty forms a glorious backdrop to the town and there are a host of visitor attractions and historic hamlets only a short distance away.

Princes Risborough is a historic market town with a variety of shops and places to eat. The High Street is lined with houses dating back to the 18th century. There is an annual town festival held in July which offers a host of music and arts events including concerts, local history exhibitions, guided walks and a street fair.

Windsor lodge is ideally located within half a mile of these amenities which include a Tesco Superstore, Post Office and art gallery.

The town offers excellent transport links with regular bus services operating to Aylesbury and High Wycombe. Princes Risborough railway station is served by Chiltern Railways and offers a service to London Marylebone in one direction and Birmingham in the other.

The Lodge Manager is on hand throughout the day to support the Owners and keep the development in perfect shape as well as arranging many regular events in the Owners' Lounge from coffee mornings to games afternoons.

A Guest Suite is available for your friends and family to stay in. In addition, you are entitled to use of the Guest Suites at all Churchill Living developments across the country. Prices are available from the Lodge Manager.

Windsor Lodge has been designed with safety and security at the forefront. The apartment has an emergency Careline system installed, monitored by the onsite Lodge Manager during the day and 24 hours, 365 days a year by the Careline team. Careline integrated intruder alarm, secure video entry system and sophisticated fire and smoke detection systems throughout both the apartment and communal areas provide unrivalled peace of mind.

Windsor Lodge is managed by the award winning Churchill Estates Management, working closely with Churchill Living and Churchill Sales & Lettings to maintain the highest standards of maintenance and service for every lodge and owner.

Windsor Lodge requires at least one apartment resident to be over the age of 60 with any second resident over the age of 55.



0800 077 8717



sales@churchillsl.co.uk



churchillsl.co.uk



# Property Overview

## **\*\*ONE BEDROOM GROUND FLOOR RETIREMENT APARTMENT WITH PATIO\*\***

Welcome to Windsor Lodge! Situated Churchill Sales and Lettings are delighted to be marketing this one bedroom ground floor apartment. The property is conveniently located near the laundry room, owners lounge and entrance.

The Living Room offers ample space for living and dining room furniture and benefits from a feature electric fire with attractive surround. A French door opens to the owners private patio and windows provide lots of natural light.

The Kitchen is accessed via the Living room and offers a range of eye and base level units with working surfaces over and tiled splashbacks. There is a built-in waist height oven, 4-ring electric hob with extractor hood over, a fridge and freezer. A window provides light and ventilation.

The Bedroom is a good-sized double room with built-in mirrored wardrobe. There is plenty of space for additional furniture if required and a window keeps this lovely bedroom bright and light.

The Shower Room offers a curved shower with handrail, a WC, heated towel rail and wash basin with vanity unit beneath.

Perfectly complementing this lovely apartment is a useful storage cupboard located off the Living Room.

Call us today to book your viewing at Windsor Lodge!



# Features

- One bedroom ground floor apartment
- Fully fitted kitchen with integrated appliances
- Quiet location close to the shopping facilities in Princes Risborough
- Beautiful communal gardens with numerous seating areas
- 24-hour Careline system for safety and security
- Lodge Manager available 5 days a week
- Lift to all floors
- Owners' private car park
- A Guest Suite is available for your friends and family to stay in. In addition, you are entitled to use the Guest Suites at all Churchill Living developments across the country. Prices are available from the Lodge Manager



# Key Information

Service Charge (Year Ending 31st May 2026): £2,377.26 per annum.

Ground rent £847.55 per annum. To be reviewed in January 2032.

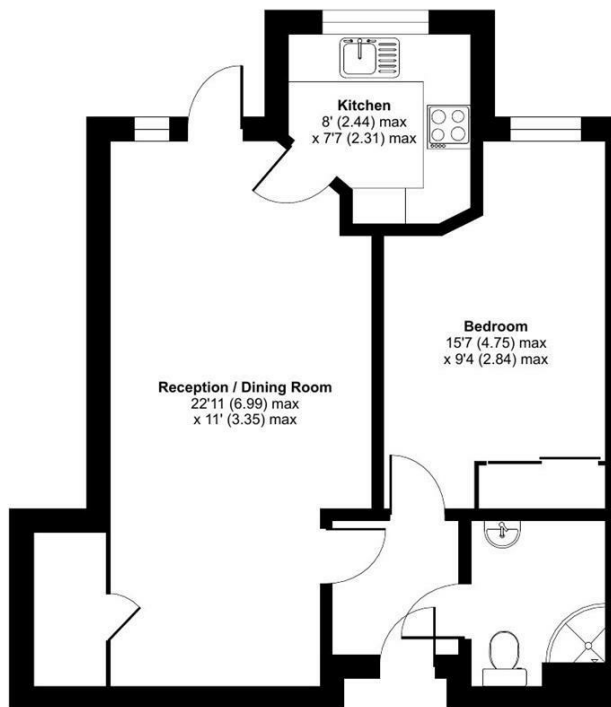
Council Tax Band C

125 year lease commencing 2011


Please check regarding Pets with Churchill Estates Management. Any consents given in relation to pets are subject to the terms of the lease and any further rules and regulations made by Churchill Estates Management.

Service charges include: Careline system, buildings insurance, water and sewerage rates, communal cleaning, utilities and maintenance, garden maintenance, lift maintenance, lodge manager and a contribution to the contingency fund.

Approximate Area = 523 sq ft / 48.6 sq m  
For identification only - Not to scale



EPC Rating: D

 Floor plan produced in accordance with RICS Property Measurement 2nd Edition, Incorporating International Property Measurement Standards (IPMS2 Residential). © nlshecom 2025. Produced for Churchill Sales & Lettings Limited. REF: 1331045

DESCRIPTION Measurements are approximate and some may be maximum on irregular walls.

CONSENTS We have not had sight of any relevant building regulations, guarantees or planning consents. All relevant documentation pertaining to this property should be checked with your legal advisor before exchanging contracts.

Property Particulars Disclaimer: These particulars are intended only as general guidance. The Company therefore gives notice that none of the material issued or visual depictions of any kind made on behalf of the Company can be relied upon as accurately describing any of the Specified Matters prescribed by any Order made under the Consumer Protection from Unfair Trading Regulations, 2008. Nor do they constitute a contract, part of a contract or a warranty.





☎ 0800 077 8717

✉ [sales@churchillsl.co.uk](mailto:sales@churchillsl.co.uk)

🌐 [churchillsl.co.uk](http://churchillsl.co.uk)

**Churchill**  
Sales & Lettings  
Retirement Property Specialists