



Asking Price £315,000 Leasehold

2 Bedroom, Apartment - Retirement

13, Neville Lodge Rowe Avenue, Peacehaven, East Sussex, BN10 7PE



0800 077 8717



sales@churchillsl.co.uk



churchillsl.co.uk

Churchill
Sales & Lettings
Retirement Property Specialists

Neville Lodge

Neville Lodge is a delightful development of one and two bedroom retirement apartments benefiting from beautiful views across the English Channel with all apartments featuring a balcony or patio.

Peacehaven is a pretty little seaside town situated in East Sussex. The high street is just 0.1 miles away, which offers a wide variety of coffee shops, eateries and convenience stores, with a nearby Meridian Shopping Centre benefitting from a supermarket, library and a further wide range of shops.

The local bus service runs straight past the development, with a direct route to Brighton and Peacehaven.

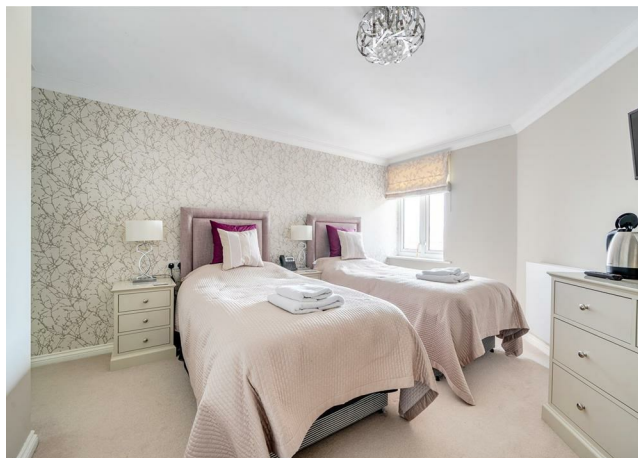
Neville Lodge's manager is on hand throughout the day to support the residents and keep the development in perfect shape. They assist in arranging many regular events in the Owners' Lounge from coffee mornings to games afternoons.

A Guest Suite is available for your friends and family to stay in. In addition, you are entitled to use of the Guest Suites at all Churchill Living developments across the country. Prices are available from the Lodge Manager.

Neville Lodge has been designed with safety and security at the forefront. The Apartment has an emergency Careline system installed, monitored by the onsite Lodge Manager during the day and 24 hours, 365 days a year by the Careline team. Careline integrated intruder alarm, secure video entry system and sophisticated fire and smoke detection systems throughout both the apartment and communal areas provide unrivalled peace of mind.

Neville Lodge is managed by the award winning Churchill Estates Management, working closely with Churchill Living and Churchill Sales & Lettings to maintain the highest standards of maintenance and service for every lodge and owner.

Neville Lodge requires at least one apartment resident to be over the age of 60 with any second resident over the age of 55.



Property Overview

DRAFT PARTICULARS - Awaiting verification from the seller

****TWO BEDROOM FIRST FLOOR RETIREMENT APARTMENT WITH PATIO****

Welcome to Neville Lodge! Churchill Sales & Lettings are delighted to be marketing this lovely two bedroom first floor apartment. The property is conveniently located near the lift and stairs and is presented in good order throughout.

The Living Room is generous in size offering ample space for living and dining room furniture. A french door opens to the owners private patio. Two windows provide lots of natural light.

The Kitchen is accessed via the Living Room and offers a range of modern eye and base level units with working surfaces over and tiled splashbacks. There is a built-in waist-height oven, 4-ring electric hob with extractor hood over, washer/dryer, fridge and freezer. A window provides light and ventilation.

Bedroom One is a good-sized double room with a built-in mirrored wardrobe. There is plenty of space for additional bedroom furniture if required and a window keeps this lovely bedroom bright and light.

Bedroom Two is another good-sized double room that could also be used as a separate Dining Room, Study or Hobby Room.

The Shower Room offers a large shower cubicle with handrail, heated towel rail, WC and wash basin with vanity unit beneath.

A separate WC is located off the hallway offering a WC, heated towel rail and wash hand basin.

Perfectly complementing this wonderful apartment are two useful storage cupboards located in the hallway.

Call us today to book your viewing at Neville Lodge!



Features

- Two bedroom first floor apartment
- Fully fitted kitchen with integrated appliances
- Lodge Manager available Monday to Friday
- Owners lounge & Kitchen with regular social events
- Lift to all floors
- 24 Hour emergency Careline system
- Great location close to the town centre & excellent transport links
- Owners Parking
- A Guest Suite is available for your friends and family to stay in. In addition, you are entitled to use of the Guest Suites at all Churchill Living developments across the country



Key Information

Service Charge (Year Ending 31st May 2026): £5,378.07 per annum.

Ground Rent: £892.14 per annum. To be reviewed in October 2032

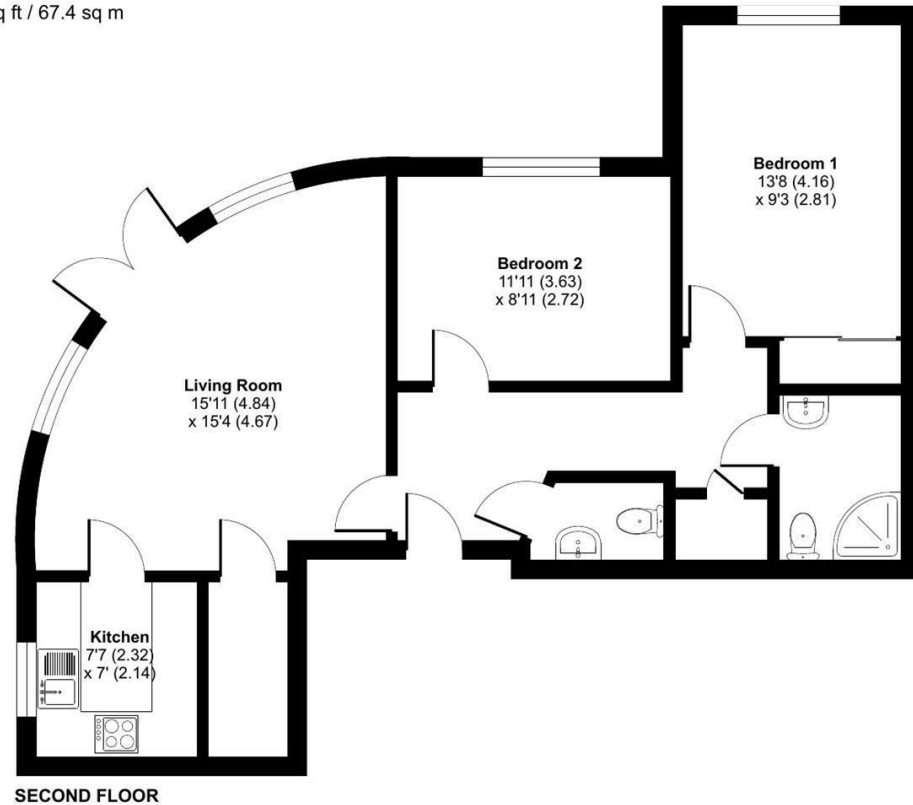
Council Tax: Band C

999 year Lease commencing 2018

Please check regarding Pets with Churchill Estates Management. Any consents given in relation to pets are subject to the terms of the lease and any further rules and regulations made by Churchill Estates Management.

Service charges include: Careline system, buildings insurance, water and sewerage rates, Ground Source heating, communal cleaning, utilities and maintenance, garden maintenance, lift maintenance & Lodge Manager.

Approximate Area = 726 sq ft / 67.4 sq m
For identification only - Not to scale



EPC Rating: B

Floor plan produced in accordance with RICS Property Measurement 2nd Edition, Incorporating International Property Measurement Standards (IPMS2 Residential). © nichecom 2025. Produced for Churchill Sales & Lettings Limited. REF: 1296952

DESCRIPTION Measurements are approximate and some may be maximum on irregular walls.

CONSENTS We have not had sight of any relevant building regulations, guarantees or planning consents. All relevant documentation pertaining to this property should be checked with your legal advisor before exchanging contracts.

Property Particulars Disclaimer: These particulars are intended only as general guidance. The Company therefore gives notice that none of the material issued or visual depictions of any kind made on behalf of the Company can be relied upon as accurately describing any of the Specified Matters prescribed by any Order made under the Consumer Protection from Unfair Trading Regulations, 2008. Nor do they constitute a contract, part of a contract or a warranty.



☎ 0800 077 8717

✉ sales@churchillsl.co.uk

🌐 churchillsl.co.uk

Churchill
Sales & Lettings
Retirement Property Specialists