



**Asking Price £220,000 Leasehold**

**1 Bedroom, Apartment - Retirement**

21, Eliot Lodge King Edward Street, Ashbourne, Derbyshire, DE6 1TY

 **0800 077 8717**

 **sales@churchillsl.co.uk**

 **churchillsl.co.uk**

**Churchill**  
**Sales & Lettings**  
Retirement Property Specialists



# Eliot Lodge

Eliot Lodge in Ashbourne is a Churchill Development with 38 one and two bedroom apartments. The Lodge is named in memory of George Eliot, the pen name for Mary Ann Evans an English Novelist. Eliot Lodge is ideally located within easy reach of local amenities and the nearby Ashbourne town centre.

Ashbourne is a thriving market town nestled in the heart of the Derbyshire Dales, the closest town to the popular area of Dovedale and located on the southern edge of the Peak District.

Ashbourne's cobbled streets and alleys are filled with a variety of antique furniture shops, art galleries, a library and a modern leisure centre. A traditional outdoor market is held every Thursday and Saturday. Directly behind Eliot Lodge you will find a Sainsbury's close together with a doctors' surgery, opticians, dentists, a pharmacy and a medical centre.

Eliot Lodge's manager is on hand during the day to support the residents and keep the development in perfect shape. They arrange many regular events in the Owners' Lounge from coffee mornings to games afternoons.

A Guest Suite is available for your friends and family to stay in. In addition, you are entitled to use the Guest Suites at all Churchill Retirement Living developments across the country. Prices are available from the Lodge Manager.

Eliot Lodge has been designed with safety and security at the forefront. The apartment has an emergency Careline system installed, monitored by the onsite Lodge Manager during the day and 24 hours, 365 days a year by the Careline team. Careline integrated intruder alarm, secure video entry system and sophisticated fire and smoke detection systems throughout both the apartment and communal areas provide unrivalled peace of mind.

Eliot Lodge is managed by the award winning Churchill Estates Management, working closely with Churchill Retirement Living and Churchill Sales & Lettings to maintain the highest standards of maintenance and service for every lodge and owner.

Eliot Lodge requires at least one apartment resident to be over the age of 60 with any second resident over the age of 55.



# Property Overview

## **\*\*ONE BEDROOM FIRST FLOOR RETIREMENT APARTMENT\*\***

Churchill Sales & Lettings are delighted to be marketing this lovely one bedroom first floor apartment, conveniently located for the lift and stairs. The property is one of the larger one bedroom apartments offering spacious accommodation throughout and is presented in good decorative order.

The bright and airy Living Room offers ample space for living and dining room furniture and two windows provide lots of natural light.

The Kitchen is accessed via the Living Room and offers a range of modern eye and base level units with working surfaces over and tiled splashbacks. There is a built-in waist-height oven, 4 ring electric hob with extractor hood over, a fridge, a frost-free freezer and a washer/dryer. A window allows for light and ventilation.

The Bedroom is a generous double room with a useful built-in mirrored wardrobe and plenty of space for additional bedroom furniture if required.

The Shower Room offers a curved shower with handrail, heated towel rail, a WC and wash hand basin with vanity unit beneath.

Perfectly complementing this wonderful apartment is a useful storage cupboard located in the hallway.

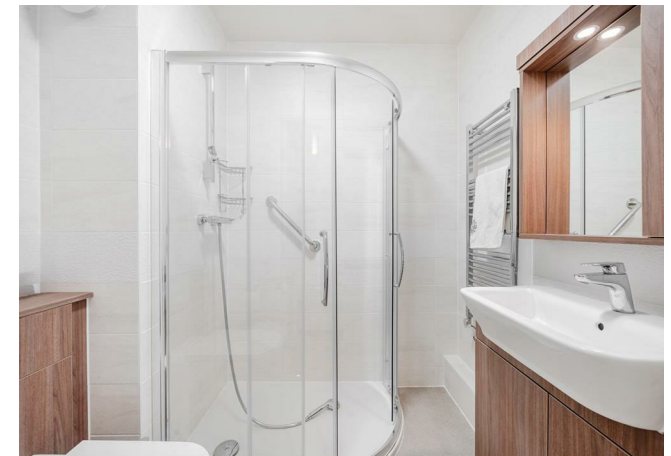
Call us today to book your viewing at Eliot Lodge!





# Features

- One bedroom first floor apartment
- Fully fitted kitchen with integrated appliances
- Lodge manager available 5 days a week
- Owners lounge & Kitchen with regular social events
- 24 Hour Careline system for safety and security
- Owners private car park
- Close to local shops and great transport links
- A Guest Suite is available for your friends and family to stay in. In addition, you are entitled to use the Guest Suites at all Churchill Living developments across the country
- Landscaped gardens



# Key Information

Service charge (Year Ending 30th November 2025)  
£3,122.11 per annum.

Ground rent £575 per annum. To be reviewed in June 2026

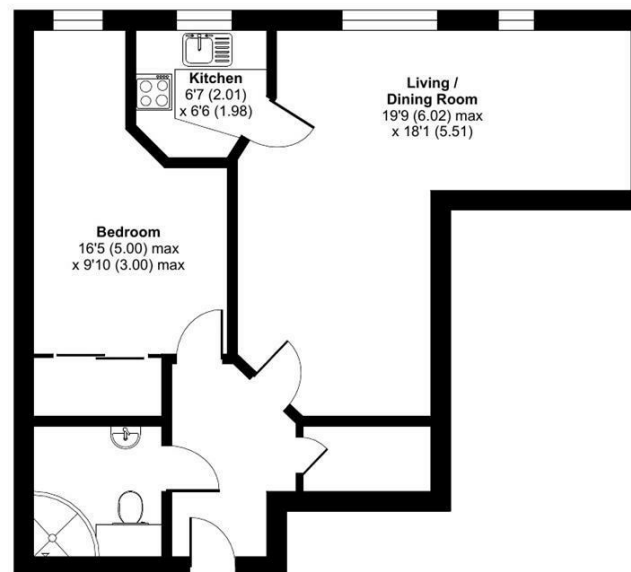
999 Year lease from 2019

Council Tax Band B


Please check regarding Pets with Churchill Estates Management. Any consents given in relation to pets are subject to the terms of the lease and any further rules and regulations made by Churchill Estates Management

Service charges include: Careline system, buildings insurance, water and sewerage rates, Air Source heating, communal cleaning, utilities and maintenance, garden maintenance, lift maintenance & Lodge Manager.

Approximate Area = 596 sq ft / 55.4 sq m  
For identification only - Not to scale



EPC Rating: B

 Floor plan produced in accordance with RICS Property Measurement 2nd Edition, Incorporating International Property Measurement Standards (IPMS2 Residential). © n/checom 2025. Produced for Churchill Sales & Lettings Limited. REF: 1306266

DESCRIPTION Measurements are approximate and some may be maximum on irregular walls.

CONSENTS We have not had sight of any relevant building regulations, guarantees or planning consents. All relevant documentation pertaining to this property should be checked with your legal advisor before exchanging contracts.

Property Particulars Disclaimer: These particulars are intended only as general guidance. The Company therefore gives notice that none of the material issued or visual depictions of any kind made on behalf of the Company can be relied upon as accurately describing any of the Specified Matters prescribed by any Order made under the Consumer Protection from Unfair Trading Regulations, 2008. Nor do they constitute a contract, part of a contract or a warranty.





☎ 0800 077 8717

✉ [sales@churchillsl.co.uk](mailto:sales@churchillsl.co.uk)

🌐 [churchillsl.co.uk](http://churchillsl.co.uk)

**Churchill**  
Sales & Lettings  
Retirement Property Specialists