



Asking Price £129,950 Leasehold

1 Bedroom, Apartment - Retirement

75, Summerson Lodge Alverstone Road, Southsea, Hampshire, PO4 8GS

 **0800 077 8717**

 **sales@churchillsl.co.uk**

 **churchillsl.co.uk**

Churchill
Sales & Lettings
Retirement Property Specialists

Summerson Lodge

Summerson Lodge is a delightful gated development of 76 one and two bedroom apartments in Milton, a suburb of the historic waterfront city of Portsmouth.

The Lodge is perfectly situated for the local shops and amenities and is close to both Milton and Bransbury Parks. Portsmouth Historic Dockyard is a great local attraction and home to HMS Victory, HMS Warrior and the Mary Rose Museum, all next to the Spinnaker Tower for great views to the Isle of Wight and across the South Downs. Close by is the popular shopping centre Gunwharf Quays with over 95 stores and restaurants, a health and fitness centre and a 14 screen cinema. Summerson Lodge is well connected for transport with bus stops right outside and rail links into London, Brighton and Cardiff.

The Lodge manager is on hand throughout the day to support the Owners and keep the development in perfect shape as well as arranging many regular events in the Owners' Lounge from coffee mornings to games afternoons.

A Guest Suite is available for your friends and family to stay in. In addition, you are entitled to use of the Guest Suites at all Churchill Living developments across the country. Prices are available from the Lodge Manager.

Summerson Lodge has been designed with safety and security at the forefront. All apartments and communal areas have an emergency Careline system installed, monitored by the onsite Lodge Manager during the day and 24 hours, 365 days a year by the Careline team. A Careline integrated intruder alarm, secure video entry system and sophisticated fire and smoke detection systems throughout both the apartment and communal areas provide unrivalled peace of mind.

Summerson Lodge is managed by the award winning Churchill Estates Management, working closely with Churchill Living and Churchill Sales & Lettings to maintain the highest standards of maintenance and service for every lodge and owner.

Summerson Lodge requires at least one apartment resident to be over the age of 60 with any second resident over the age of 55



0800 077 8717



sales@churchillsl.co.uk



churchillsl.co.uk

Property Overview

****ONE BEDROOM THIRD FLOOR RETIREMENT APARTMENT****

Welcome to Summerson Lodge! This delightful one bedroom third floor retirement apartment offers spacious accommodation throughout and is conveniently located near the lift and stairs providing easy access.

The Living Room offers a feature electric fireplace with attractive surround. There is ample space for living and dining room furniture. A large window provides lots of natural light.

The Kitchen is accessed via the Living Room with a range of eye and base level units with working surfaces over and tiled splashbacks. There is a built-in waist-height oven, 4-ring electric hob with extractor hood over, a fridge and freezer. A window allows for light and ventilation.

The Bedroom is a good-sized double room with a built-in mirrored wardrobe. A window keeps this lovely bedroom bright and light.

The Shower Room offers a shower cubicle with handrail, heated towel rail, WC and wash basin with vanity unit beneath.

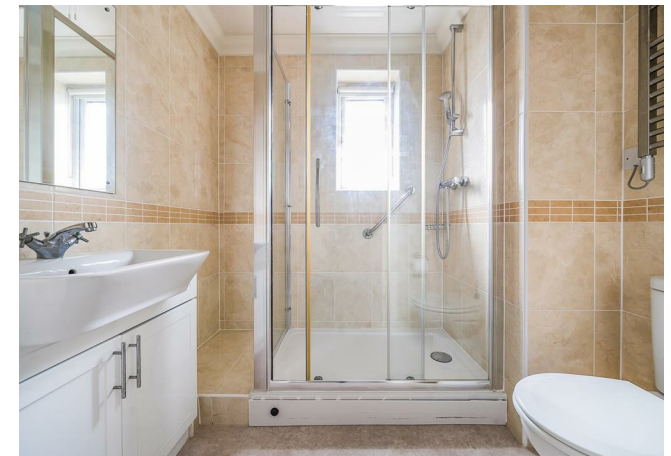
Perfectly complementing this lovely apartment is a useful walk-in storage cupboard located off the Hallway.

Call us today to book your viewing at Summerson Lodge!



Features

- One bedroom third floor retirement apartment
- Fully fitted kitchen with integrated appliances
- Lift access to all floors
- Lodge Manager available 5 days a week
- Owners' Lounge & Kitchen with regular social events
- 24 hour Careline system for safety and security
- Owners' private car park
- Great location close to the town centre & excellent transport links
- A Guest Suite is available for your friends and family to stay in. In addition, you are entitled to use of the Guest Suites at all Churchill Living developments across the country.
- Landscaped gardens



Key Information

Service Charge (Year ending 31st May 2026): £2,395.34 per annum.

Ground rent: £647.98 per annum. To be reviewed May 2026.

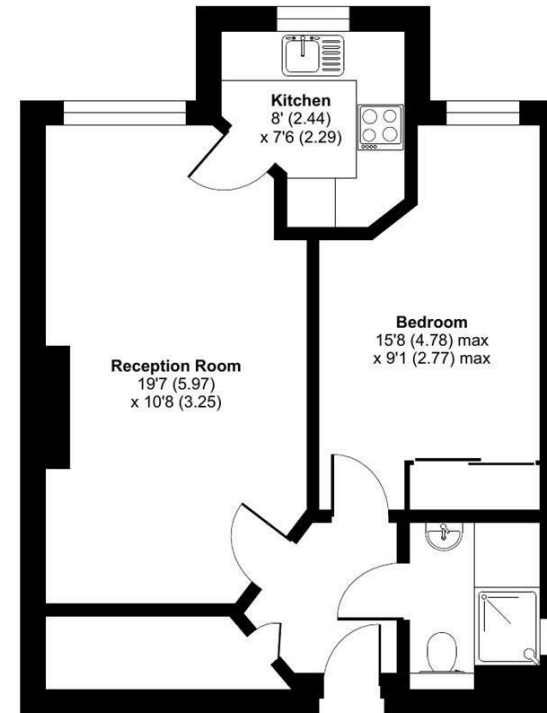
Council Tax Band: B

125 year Lease commencing 2012

Please check regarding Pets with Churchill Estates Management. Any consents given in relation to pets are subject to the terms of the lease and any further rules and regulations made by Churchill Estates Management.

Service charges include: Careline system, buildings insurance, water and sewerage rates, communal cleaning, utilities and maintenance, garden maintenance, lift maintenance, lodge manager and a contribution to the contingency fund.

Approximate Area = 489 sq ft / 45.4 sq m
For identification only - Not to scale



EPC Rating: D

 Floor plan produced in accordance with RICS Property Measurement 2nd Edition, Incorporating International Property Measurement Standards (IPMS2 Residential). © n/checom 2025. Produced for Churchill Sales & Lettings Limited. REF: 1252491

DESCRIPTION Measurements are approximate and some may be maximum on irregular walls.

CONSENTS We have not had sight of any relevant building regulations, guarantees or planning consents. All relevant documentation pertaining to this property should be checked with your legal advisor before exchanging contracts.

Property Particulars Disclaimer: These particulars are intended only as general guidance. The Company therefore gives notice that none of the material issued or visual depictions of any kind made on behalf of the Company can be relied upon as accurately describing any of the Specified Matters prescribed by any Order made under the Consumer Protection from Unfair Trading Regulations, 2008. Nor do they constitute a contract, part of a contract or a warranty.



☎ 0800 077 8717

✉ sales@churchillsl.co.uk

🌐 churchillsl.co.uk

Churchill
Sales & Lettings
Retirement Property Specialists