



Asking Price £325,000 Leasehold

1 Bedroom, Apartment - Retirement

19, Beeches Lodge 1-46 Reedham Road, Burnham, Buckinghamshire, SL1 8FD

 0800 077 8717

 sales@churchillsl.co.uk

 churchillsl.co.uk

Churchill
Sales & Lettings
Retirement Property Specialists

Beeches Lodge

Beeches Lodge is a prestigious development of 46 one and two-bedroom properties, ideally located in the heart of the village just a few hundred yards from the Post Office and Burnham Village Store.

The village has a traditional High Street with many buildings dating from the 18th and 19th century and parts of others are even older such as St Peter's Church with its roots in the 12th century. There are two small supermarkets, a variety of eateries, coffee shops, hairdressers, bakers, health and beauty, natural food shops, a traditional butchers and a weekly market.

Transport Links for Burnham are good with Burnham Railway Station offering services to London Paddington and Reading, with trains continuing to and from Didcot. Buses serve the local area offering services to the local towns of Slough, Maidenhead and Bracknell.

The Lodge manager is on hand throughout the day to support the Owners and keep the development in perfect shape as well as arranging many regular events in the Owners' Lounge from coffee mornings to games afternoons.

A Guest Suite is available for your friends and family to stay in. In addition, you are entitled to use of the Guest Suites at all Churchill Living developments across the country. Prices are available from the Lodge Manager.

Beeches Lodge has been designed with safety and security at the forefront. The apartment has an emergency Careline system installed, monitored by the onsite Lodge Manager during the day and 24 hours, 365 days a year by the Careline team. Careline integrated intruder alarm, secure video entry system and sophisticated fire and smoke detection systems throughout both the apartment and communal areas provide unrivaled peace of mind.

Beeches Lodge is managed by the award-winning Churchill Estates Management, working closely with Churchill Living and Churchill Sales & Lettings to maintain the highest standards of maintenance and service for every lodge and owner.

Beeches Lodge requires at least one apartment Owner to be over the age of 60 with any second Owner over the age of 55.



Property Overview

****ONE BEDROOM RETIREMENT APARTMENT WITH JULIET BALCONY****

Churchill Sales & Lettings are delighted to be marketing this lovely, bright one bedroom first floor apartment located near the stairs and presented in fantastic order throughout.

The Lounge offers ample space for living and dining room furniture and has a feature electric fireplace with attractive surround. A door opens to a Juliet Balcony with garden views.

The Kitchen is accessed via the Lounge and offers a range of modern eye and base level units with working surfaces over and tiled splashbacks. There is a built in waist height oven, 4 ring electric hob with extractor hood over, a fridge and a freezer. A window allows for light and ventilation.

The Bedroom is a generous double room with a useful built in mirrored wardrobe and plenty of space for additional bedroom furniture if required.

The Shower Room offers a curved shower cubicle with handrail, heated towel rail, a WC and wash hand basin with vanity unit beneath.

Perfectly complementing this wonderful apartment is a useful storage cupboard located in the hallway.

Call us today to book your viewing at Beeches Lodge!



Features

- Light, one bedroom first floor apartment with Juliet Balcony
- Fully fitted kitchen with integrated appliances
- Lodge manager available 5 days a week
- Owners' lounge & kitchen with regular social events
- 24 hours Careline system for safety and security
- Owners' private car park
- Great location close to the town centre & excellent transport links
- A Guest Suite is available for your friends and family to stay in. In addition, you are entitled to use of the Guest Suites at all Churchill Living developments across the country.



Key Information

Service Charge (Year ending 30th November 2025): £3,295.89 per annum.

Ground Rent: £575 per annum. To be reviewed February 2027

Council Tax: Band C

999 year Lease commencing 2020

Please check regarding Pets with Churchill Estates Management. Any consents given in relation to pets are subject to the terms of the lease and any further rules and regulations made by Churchill Estates Management.

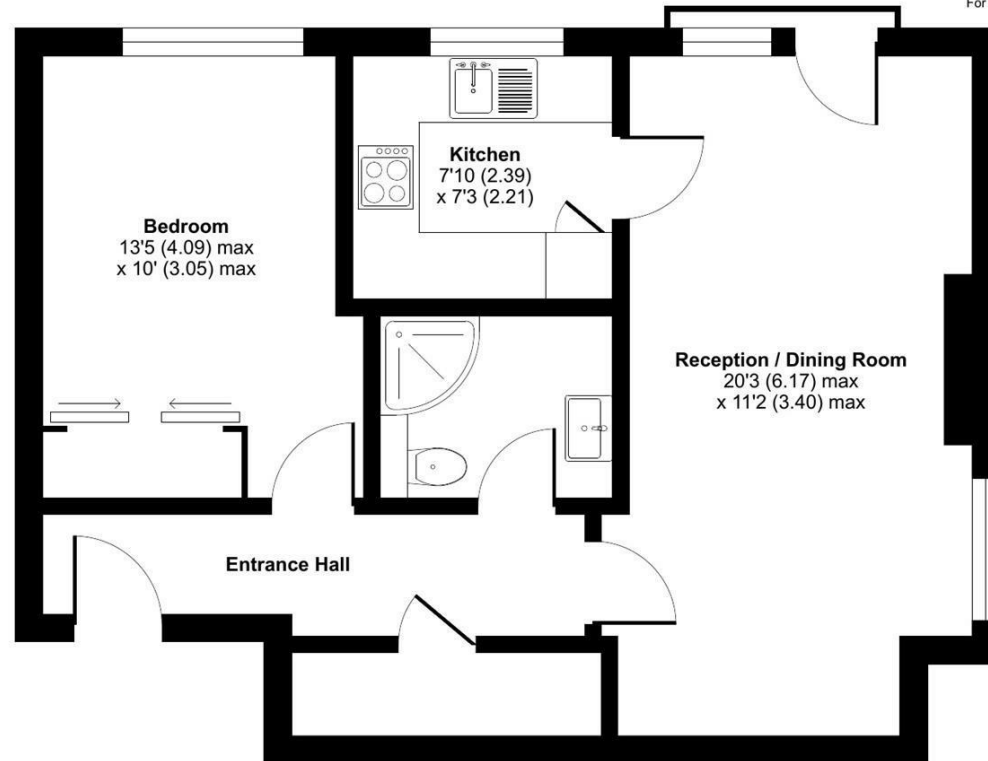
Service charges include: Careline system, buildings insurance, water and sewerage rates, Ground Source heating, communal cleaning, utilities and maintenance, garden maintenance, lift maintenance, lodge manager and a contribution to the contingency fund.

A 1% contribution of the final selling price to the contingency fund is payable by the Seller upon completion of the sale of the property.

EPC Rating: B

 Floor plan produced in accordance with RICS Property Measurement 2nd Edition, incorporating International Property Measurement Standards (IPMS2 Residential), © n/checom 2024. Produced for Churchill Sales & Lettings Limited. REF: 1209431

Approximate Area = 540 sq ft / 50.1 sq m
For identification only - Not to scale



DESCRIPTION Measurements are approximate and some may be maximum on irregular walls.

CONSENTS We have not had sight of any relevant building regulations, guarantees or planning consents. All relevant documentation pertaining to this property should be checked with your legal advisor before exchanging contracts.

Property Particulars Disclaimer: These particulars are intended only as general guidance. The Company therefore gives notice that none of the material issued or visual depictions of any kind made on behalf of the Company can be relied upon as accurately describing any of the Specified Matters prescribed by any Order made under the Consumer Protection from Unfair Trading Regulations, 2008. Nor do they constitute a contract, part of a contract or a warranty.



☎ 0800 077 8717

✉ sales@churchillsl.co.uk

🌐 churchillsl.co.uk

Churchill
Sales & Lettings
Retirement Property Specialists