



Asking Price £250,000 Leasehold

1 Bedroom, Apartment - Retirement

32, Coleman Lodge Little Aston Road, Aldridge, Walsall, West Midlands, WS9 8BF

 0800 077 8717

 sales@churchillsl.co.uk

 churchillsl.co.uk

Churchill
Sales & Lettings
Retirement Property Specialists

Coleman Lodge

Coleman Lodge is a delightful development of one and two bedroom, retirement apartments located in the heart of Aldridge village; a vibrant area of Walsall in the West Midlands.

In Aldridge town, there are a mix of well-known high street brands and independent retailers, with many cafes and eateries within walking distance of the Lodge.

Aldridge is a great place for socialising. Local amenities include a library, community centre, post office, an HSBC bank, chemist, doctors, hairdressers and Specsavers. In addition to Morrison's nearby for your grocery, shopping the vibrant Aldridge Shopping centre offers a good selection of shops and cafes including Costa Coffee, Boots, Francesco, Thomas Cook and WH Smith. Less than three minutes from the development, visiting Aldridge Shopping Centre could not be easier due to its central location in Aldridge village.

Travel is easy from the centre going to Birmingham, Lichfield and other surrounding areas.

The Lodge manager is on hand throughout the day to support the Owners and keep the development in perfect shape as well as arranging many regular events in the Owners' Lounge from coffee mornings to games afternoons.

A Guest Suite is available for your friends and family to stay in. In addition, you are entitled to use of the Guest Suites at all Churchill Retirement Living developments across the country. Prices are available from the Lodge Manager.

Coleman Lodge has been designed with safety and security at the forefront. The apartment has an emergency Careline system installed, monitored by the onsite Lodge Manager during the day and 24 hours, 365 days a year by the Careline team. Careline integrated intruder alarm, secure video entry system and sophisticated fire and smoke detection systems throughout both the apartment and communal areas provide unrivalled peace of mind.

Coleman Lodge is managed by the award winning Churchill Estates Management, working closely with Churchill Retirement Living and Churchill Sales & Lettings to maintain the highest standards of maintenance and service for every lodge and owner.

Coleman Lodge requires at least one apartment resident to be over the age of 60 with any second resident over the age of 55.



Property Overview

Churchill Sales & Lettings are delighted to be marketing this stunning one bedroom third floor apartment overlooking the communal garden. The property offers deceptively spacious accommodation throughout and is presented in fantastic order.

The Lounge offers ample space for living and dining room furniture and has a feature electric fireplace with attractive surround.

The Kitchen is accessed via the Lounge and offers a range of eye and base level units with working surfaces over and tiled splashbacks. There is a built in waist height oven, 4 ring electric hob with extractor hood over, a fridge, a frost-free freezer and washer/dryer. A window allows for light and ventilation.

The Bedroom is a generous double room with a useful built in mirrored wardrobe and plenty of space for additional bedroom furniture if required.

The Shower Room offers a large shower cubicle with handrail, heated towel rail, a WC and wash hand basin with vanity unit beneath.

Perfectly complementing this wonderful apartment is a useful storage cupboard located in the hallway.



Features

- One bedroom third floor retirement apartment
- Good decorative order
- Convenient for the lift and stairs
- Fully fitted kitchen with integrated appliances
- Lodge manager available 5 days a week
- Owners lounge & Kitchen with regular social events
- 24 Hour Careline system for safety and security
- Great location close to the town centre & excellent transport links
- Owners private car park
- A Guest Suite is available for your friends and family to stay in. In addition, you are entitled to use of the Guest Suites at all Churchill Retirement Living developments across the country.



Key Information

Service Charge (Year Ending 31st May 2024):
£4,452.58 per annum.

Ground rent £575.00 per annum. To be reviewed in
June 2025

Council Tax Band C

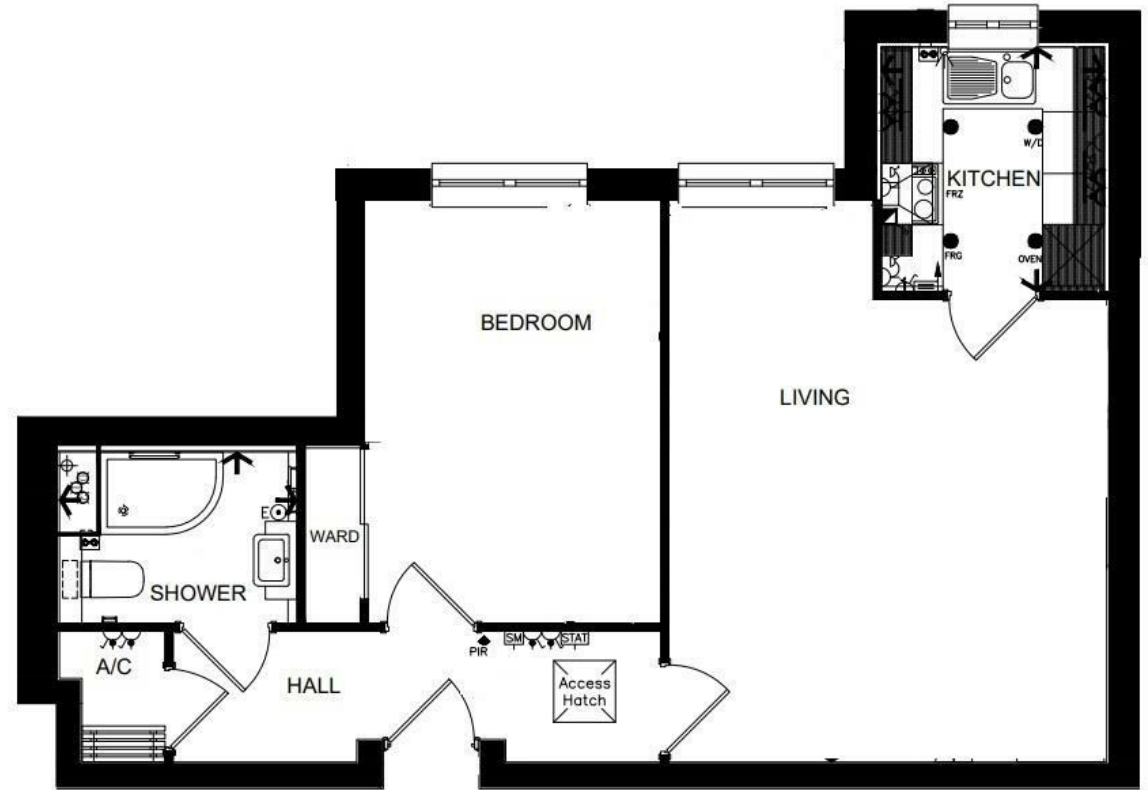
999 year Lease commencing 2018

Please check regarding Pets with Churchill Estates
Management. Any consents given in relation to pets
are subject to the terms of the lease and any further
rules and regulations made by Churchill Estates
Management

Service charges include: Careline system, buildings
insurance, water and sewerage rates, air source
heating, communal cleaning, utilities and
maintenance, garden maintenance, lift maintenance,
lodge manager and a contribution to the
contingency fund.

A 1% contribution of the final selling price to the
contingency fund is payable by the Seller upon
completion of the sale of the property.

EPC Rating: B



Living	Width	14'-0" [4265]	max	Length	17'-9" [5420]	max
Kitchen	Width	7'-1" [2170]	max	Length	7'-10" [2380]	max
Shower Room	Width	5'-6" [1665]	max	Length	7'-7" [2315]	max
Bedroom	Width	9'-4" [2850]	max	Length	13'-4" [4070]	max

DESCRIPTION Measurements are approximate and some may be maximum on irregular walls.

CONSENTS We have not had sight of any relevant building regulations, guarantees or planning consents all relevant documentation pertaining to this property should be checked with your legal advisor before exchanging contracts.

Property Particulars Disclaimer: These particulars are intended only as general guidance. The Company therefore gives notice that none of the material issued or visual depictions of any kind made on behalf of the Company can be relied upon as accurately describing any of the Specified Matters prescribed by any Order made under the Consumer Protection from Unfair Trading Regulations, 2008. Nor do they constitute a contract, part of a contract or a warranty.



☎ 0800 077 8717

✉ sales@churchillsl.co.uk

🌐 churchillsl.co.uk

Churchill
Sales & Lettings
Retirement Property Specialists