



£270,000 Leasehold

1 Bedroom, Apartment - Retirement

37, Keyes Lodge King Edward Avenue, Dartford, Kent, DA1 2FH

 0800 077 8717

 sales@churchillsl.co.uk

 churchillsl.co.uk

Churchill
Sales & Lettings
Retirement Property Specialists

Keyes Lodge

Situated on King Edward Avenue in the town of Dartford, Keyes Lodge is a stylish development of 68 one and two bedroom retirement apartments.

The excellent transport links are a real benefit of Dartford. There are quick links to central London and good access to the M25. Buses also service the area and deliver delightful journeys to the magical heartlands of the Weald.

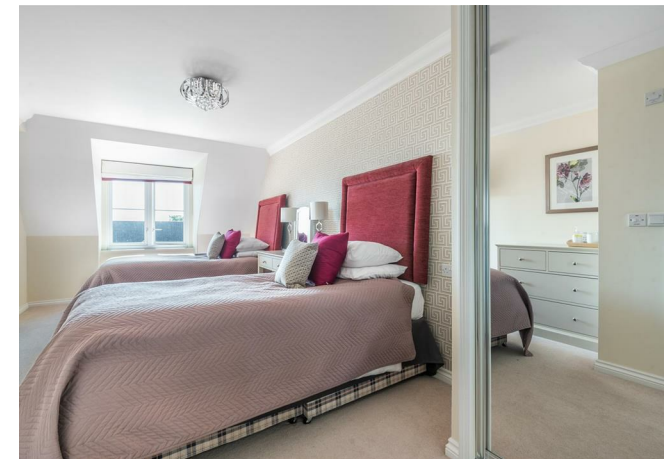
Keyes Lodge's manager is on hand throughout the day to support the owners and keep the development in perfect shape. The manager assists with arranging many regular events in the Owners' Lounge from coffee mornings to games afternoons.

A Guest Suite is available for your friends and family to stay in. In addition, you are entitled to use of the Guest Suites at all Churchill Retirement Living developments across the country. Prices are available from the Lodge Manager.

Keyes Lodge has been designed with safety and security at the forefront. The apartment has an emergency Careline system installed, monitored by the onsite Lodge Manager during the day and 24 hours, 365 days a year by the Careline team. A Careline integrated intruder alarm, secure video entry system and sophisticated fire and smoke detection systems throughout both the apartment and communal areas provide unrivalled peace of mind.

Keyes Lodge is managed by the award winning Churchill Estates Management, working closely with Churchill Retirement Living and Churchill Sales & Lettings to maintain the highest standards of maintenance and service for every lodge and owner.

Keyes Lodge requires at least one apartment resident to be over the age of 60 with any second resident over the age of 55.



Property Overview

Churchill Sales & Lettings are delighted to be marketing this lovely one bedroom second floor apartment with Juliet Balcony overlooking the communal garden. The property is conveniently located for the lift and is in good decorative order throughout.

The Lounge offers ample space for living and dining room furniture with a door opening onto the Juliet Balcony.

The Kitchen is accessed via the Lounge and offers a range of eye and base level units with working surfaces over and tiled splashbacks. There is a built in waist height oven, 4 ring electric hob with extractor hood over, a fridge, a frost-free freezer and washer/dryer. A window allows for light and ventilation.

The Bedroom is a generous double room with a useful walk-in wardrobe and plenty of space for additional bedroom furniture if required.

The Shower Room offers a large shower cubicle with handrail, heated towel rail, a WC and wash hand basin with vanity unit beneath.

Perfectly complementing this wonderful apartment is a useful storage cupboard located in the hallway.



Features

- One bedroom second floor retirement apartment
- Juliet Balcony overlooking communal garden
- Conveniently located for the lift
- Fully fitted modern kitchen with integrated appliances
- Lodge manager available 5 days a week
- Owners' lounge & kitchen with regular social events
- 24 hour Careline system for safety and security
- Owners' private car park
- Owners Wellbeing Suite
- A Guest Suite is available for your friends and family to stay in. In addition, you are entitled to use of the Guest Suites at all Churchill Retirement Living developments across the country.



Key Information

Service Charge (Year ending 31st May 2024):
£3,957.65 per annum.

Ground rent: £575.00 per annum. To be reviewed
in June 2024

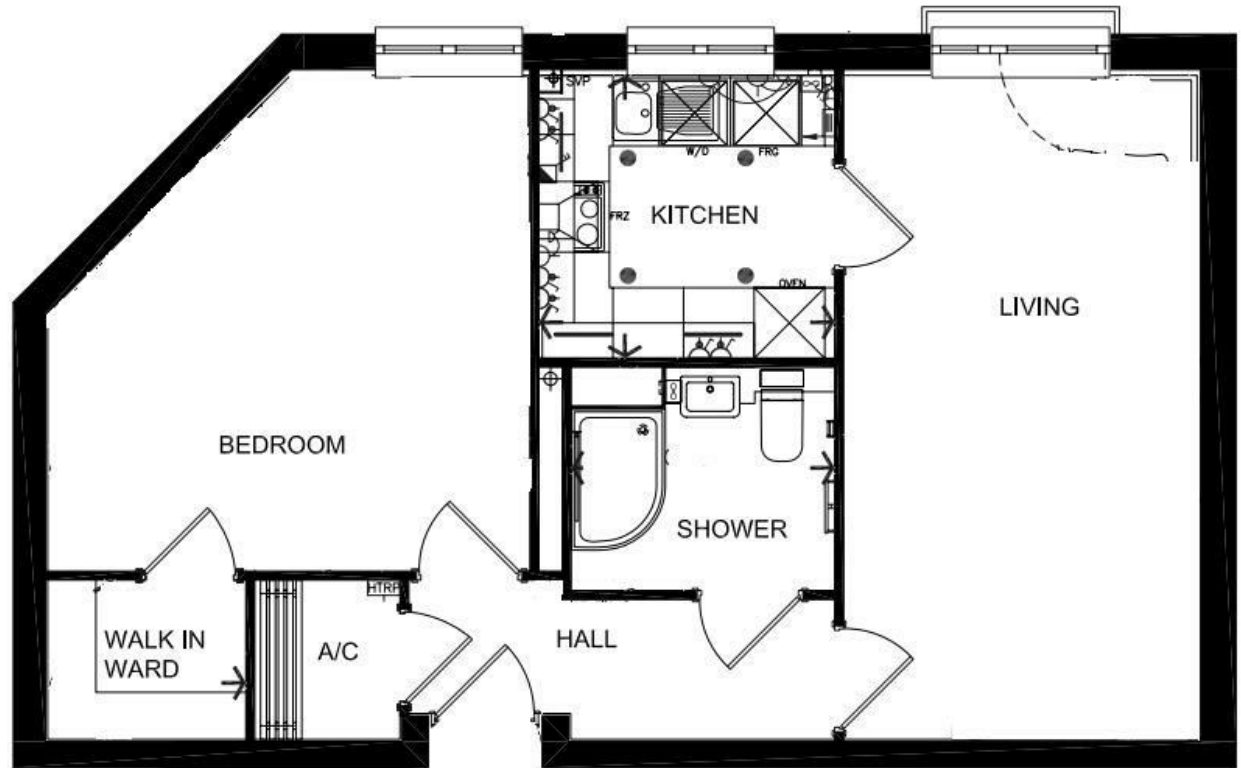
Council Tax: Band C

125 lease years commencing 2017

Please check regarding Pets with Churchill Estates Management. Any consents given in relation to pets are subject to the terms of the lease and any further rules and regulations made by Churchill Estates Management.

Service charges include: Careline system, buildings insurance, water and sewerage rates, Ground Source Heating, communal cleaning, utilities and maintenance, garden maintenance, lift maintenance & Lodge Manager.

A 1% contribution of the final selling price to the contingency fund is payable by the Seller upon completion of the sale of the property.



Living	Width	9'-10" [3005] max	Length	18'-6" [5645] max
Kitchen	Width	7'-11" [2405] max	Length	8'-3" [2515] max
Shower Room	Width	6'-3" [1900] max	Length	7'-4" [2240] max
Bedroom	Width	13'-5" [4090] max	Length	13'-10" [4215] max
Walk in Wardrobe	Width	4'-5" [1355] max	Length	5'-6" [1675] max

EPC Rating: B

DESCRIPTION Measurements are approximate and some may be maximum on irregular walls.

CONSENTS We have not had sight of any relevant building regulations, guarantees or planning consents all relevant documentation pertaining to this property should be checked with your legal advisor before exchanging contracts.

Property Particulars Disclaimer: These particulars are intended only as general guidance. The Company therefore gives notice that none of the material issued or visual depictions of any kind made on behalf of the Company can be relied upon as accurately describing any of the Specified Matters prescribed by any Order made under the Consumer Protection from Unfair Trading Regulations, 2008. Nor do they constitute a contract, part of a contract or a warranty.



☎ 0800 077 8717

✉ sales@churchillsl.co.uk

🌐 churchillsl.co.uk

Churchill
Sales & Lettings
Retirement Property Specialists